

TonoVue™

Automatic Non-Contact Tonometer
with Pachymeter

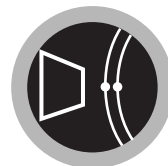
TonoVue™ integrates intraocular pressure (IOP) and central corneal thickness (CCT) measurement in one unit. Combining the technologies of Scheimpflug camera, soft air puff, and 3D auto tracking, TonoVue™ offers the measurement results of CCT, IOP, and compensated IOP with reliable accuracy.



Soft puffing



3D tracking



Pachymeter



Auto
measurememt



Touch screen



Auto cutter

CE
0120

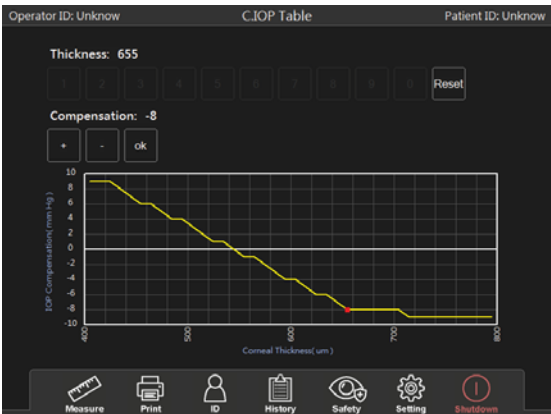
Auto CCT measurement

Central corneal thickness (CCT) is useful for LASIK surgery. Also, CCT is an important parameter to compensate intraocular pressure (IOP) which is the important index for the detection of glaucoma. Taking the technology of Scheimpflug camera and 3D auto tracking, TonoVue-P provides safe, easy and accurate measurement on CCT



Calculation of compensated IOP

The studies show that the central corneal thickness (CCT) could affect the accuracy of IOP measurement. For example, thinner cornea contributes to underestimate the IOP value. The compensated IOP formula can be also customized by user.



Fully automatic just one touch

With the fully automatic 3D tracking, multiple IOP measurements can be done by touch the center of the pupil on the screen. The measurements can be printed out automatically.



TonoVue-P

Model:
Patient ID:
Operator ID:
No. :
Time:

IOP	mmHg	
	Right	Left
	15	17
	16	16
	15	16
Avg.	15.3	16.3
C. IOP	16.3	15.3

Crystalvue Medical Corp.

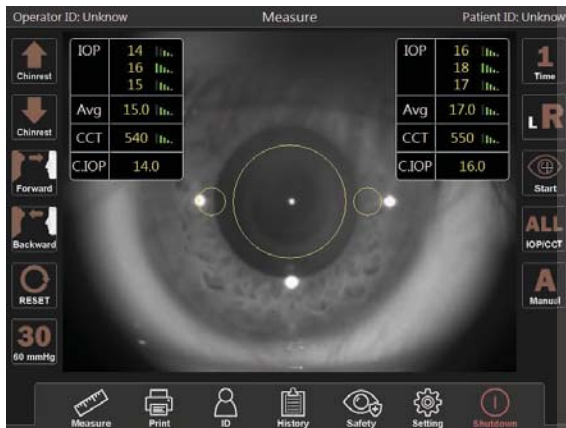
Soft air puff and quick exam time

The intelligent software controls the amount of air required for each individual eye. It achieves the softer and quieter air puff which helps patients feeling comfortable. With the intelligent 3D tracking, the measurements are done extremely fast. The influence of patients' movement can be minimized.



Large 10.1" touch screen

The 10.1" touch screen makes it easy to control all of the operating procedures and settings. The large touch screen also makes the input, search, and display of the patients' data base as well as measurements easy.



Connectivity

TonoVue-P has built in the software of patient management (data base). This software enables easy and fast access to patient data through touch screen, printer, USB or RS232.



TonoVue-P Specifications

Model	TonoVue-P
Central Corneal Thickness	
Measurement range	0.4 – 0.80 mm
Light source	Blue LED
Intraocular Pressure	
Measurement range	1– 60 mmHg
Measurement range setting	Auto/ 30 mmHg/ 60 mmHg
Measurement principle	Air puff method
Display units	mmHg/hpa
Working distance	11 mm
Alignment	Fully automatic 3D tracking
Chinrest	motorized
Display	10.1" touch LCD screen
Printer	Thermal printer (auto cutter)
Interface	USB / RS232
Power supply	AC100V to 240V, 50/60Hz, auto selected
Operating Environment	Temperature: 10°C to 35°C Humidity: 30% to 90%
Dimensions (WxDxH)	280 mm x 485 mm x 480 mm
Weight	17 Kg