

Ophthalmic DEVICES





MDT (est. 1998) is a reputable manufacturer and supplier of the ophthalmic devices, accessories and consumables (including: BioGlo - Fluorescein Sodium Ophthalmic Strips and TearFlo - Schirmer's Test Strips). Thanks to our experience and sustainable development, we are able to meet growing requirements by offering a wide range of functional products for Ophthalmologists.

We manufacture ophthalmic surgical tables, operator's chairs, ophthalmic units, electrical ophthalmic tables, as well as devices used for diagnostics and treatment of strabismus, which are proudly CE & 'made in EU' marked.

Thanks to our commitment to Ophthalmology, excellent Business Partners, a long-lasting presence in the global market, continuous investments in research and development, as well as the team of devoted employees, we are able to meet growing requirements by offering a wide range of high-quality products and services.

We are proud of our Service Engineers and Business Partners who provide customers with an outstanding level of technical support, both at the stage of equipment installation and in case of any issues appearing during product life-time. The satisfaction of the customers is of utmost importance to us, therefore we take into consideration your advice and opinions, while striving to meet the challenges and expectations we encounter.

We welcome you to acquaint yourselves with our product portfolio. In case of any questions we are at your disposal.

MDT Ophthalmic Equipment Manufacturer.



Table of content

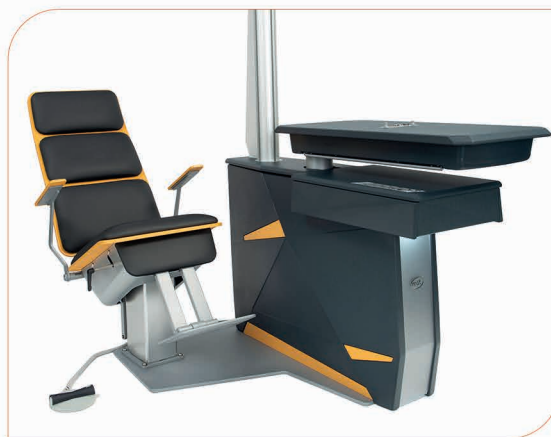
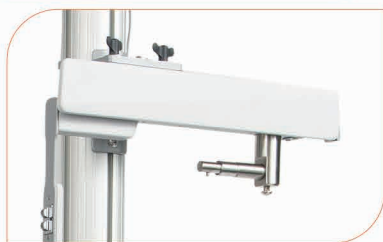
Ophthalmic Unit Eco Plus	4-5
Ophthalmic Unit Smart Plus	6-7
Ophthalmic Unit Easy	8-9
Ophthalmic Unit 3D Expert	10-11
<hr/>	
Ophthalmic Surgical Chair SC-1	12
Operators Chair OC-1	13
Mobile Lounge Chair Comfy	14
<hr/>	
Strabismus Training Devices STRAB LINE	15-18
Ophthalmic instruments tables	19-20
Ophthalmic stools	21-22
Ophthalmic accessories	23
Trial lens set	24
Ophthalmic trial frames	25
Ophthalmic Diagnostic Strips	26-27
Universal dust covers	28

Ophthalmic Unit

ECO Plus

New comfortable design





- Ergonomic and smart design
- Two instruments translating table-top with the electrical up / down adjustment
- Electrically elevated / reclined patient chair
- Chair rotatable by 90° giving possibility to examine patient with additional diagnostic devices from the side
- Practical control panel and easy accessed accessory drawer
- Easy connection of different types of slit lamps: 6V, 12V, 18V
- Aluminum column with illumination lamp, ophthalmoscope / retinoscope rack and projector support
- Wide selection of upholstery and chassis colours
- Optional: Left handed set up, spring or linear phoropter arm
- CBS-1000 Control Box Stand

Technical specification:

Input power:	110V - 230V 50/60Hz
Max. power consumption:	150 VA
Illuminating LED lamp power:	5W
Table height:	880mm - 980mm
Table-top dimensions:	880mm x 450mm

Dimensions:

Width:	1080mm - 1460mm
Depth:	1500mm
Height:	1810mm
Column chair up/down movement:	250mm
Min/max seat height:	490mm - 690mm

Ophthalmic Unit

SMART Plus

Ideal solution for the most demanding





- Ergonomic and smart design
- Two instruments translating table-top with the electrical up / down adjustment
- Electrically elevated / reclined patient chair
- Chair rotatable by 90° giving possibility to examine patient with additional diagnostic devices from the side
- Practical control panel and easy accessed accessory drawer
- Simple connection of different types of slit lamps: 6V,12V,18V
- Aluminum column with illumination lamp, ophthalmoscope / retinoscope rack and projector support
- Wide selection of upholstery and chassis colours
- Spring phoropter arm (optional)
- CBS-1000 Control Box Stand

Technical specification:

Input power:	110V - 230V 50/60Hz
Max. power consumption:	150 VA
Illuminating LED lamp power:	5W
Table height:	880mm - 980mm
Table-top dimensions:	900mm x 440mm

Dimensions:

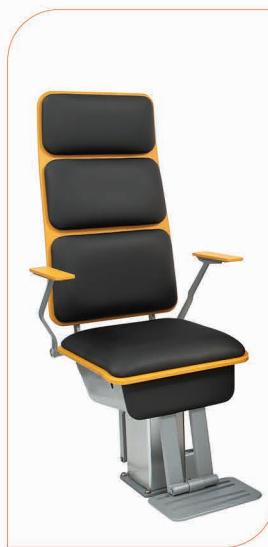
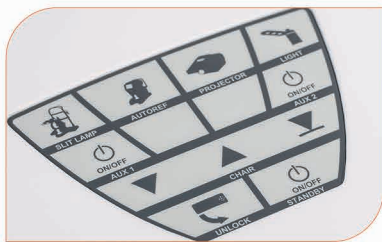
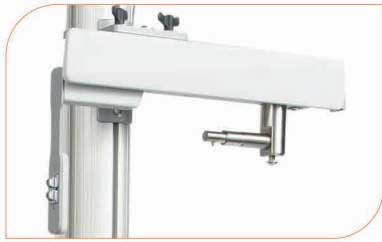
Width:	1080mm - 1460mm
Depth:	1500mm
Height:	1810mm
Column chair up/down movement:	250mm
Min/max seat height:	490mm - 690mm

Ophthalmic Unit

Easy

Excellent quality and smart design at reasonable price





- Two instruments translating table-top
- Autoref / slit lamp built-in power supply
- Adjusting knobs of a slit lamp illumination mounted on the table-top
- Electrically elevated patient chair
- Easy right or left handed set-up
- Aluminum column (with illumination lamp, chart projector mounting and phoropter arm)
- Linear or spring phoropter arm (optional)
- Wide selection of upholstery colours (optional)
- CBS-1000 Control Box Stand

Technical specification:

Input power:	110V - 230V 50/60Hz
Max. power consumption:	150 VA
Illuminating LED lamp power:	5W
Table height:	875 mm
Table-top dimensions:	434mm x 840mm

Dimensions:

Width:	1255mm -1627mm
Depth:	1920mm
Height:	1731mm
Column chair up/down movement:	250mm
Min/max seat height:	423mm - 623mm

Ophthalmic Unit

3D Expert

Professional workstation

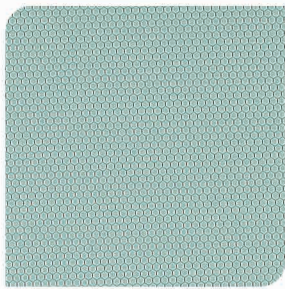


-

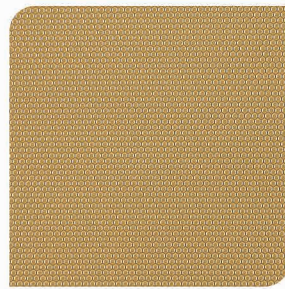
Input Power:	110V - 230V 50/60Hz
Max. power consumption:	250 V A
Illuminating LED lamp power:	24W
Table height:	780mm - 980mm
Table-top dimensions:	1250mm x 450mm (3 devices)

Width:	2500 - 3000mm
Depth:	7800 - 2610mm
Height:	max. 2000mm
Column chair up/down movement:	150mm
Min/max seat height:	550mm - 700mm





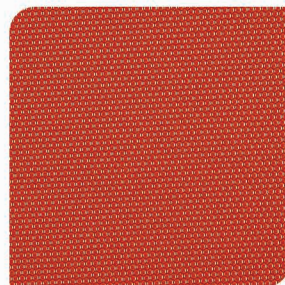
VITA



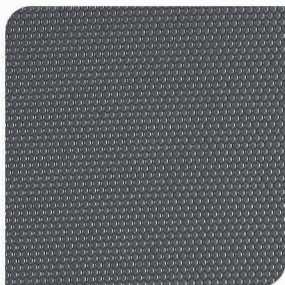
LATTE



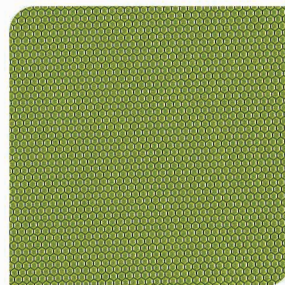
NERO



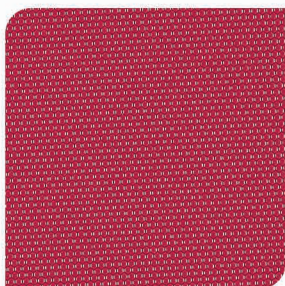
BRUNA



SCURO



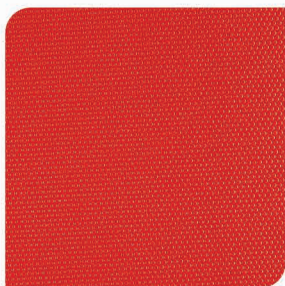
MELA



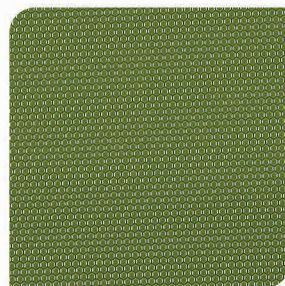
ROSA



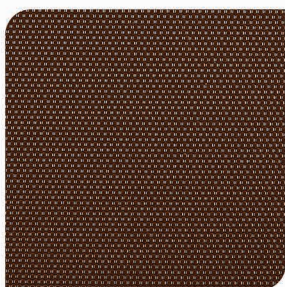
STELLA



AMORE



ZUCCHINI



ESPRESSO



AMALFI



www.mdt.pl

MDT Sp. z o.o.
ul. Skosna 12A
30-383 Krakow

tel.: +48 12 655 30 65
e-mail: office@mdt.pl